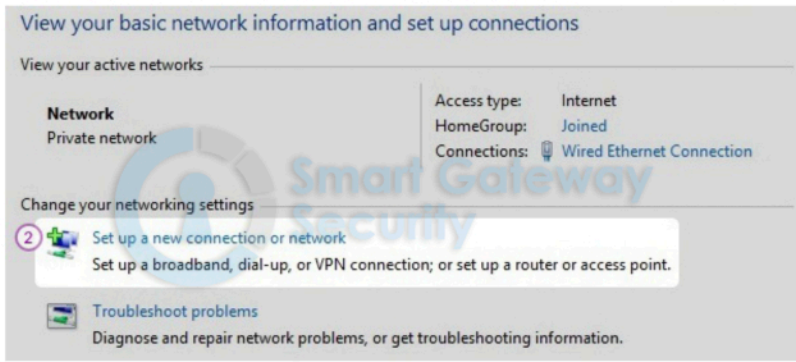


If you want to set up VPN manually, go step-by-step through following instructions to set up PPTP VPN on Windows 8.

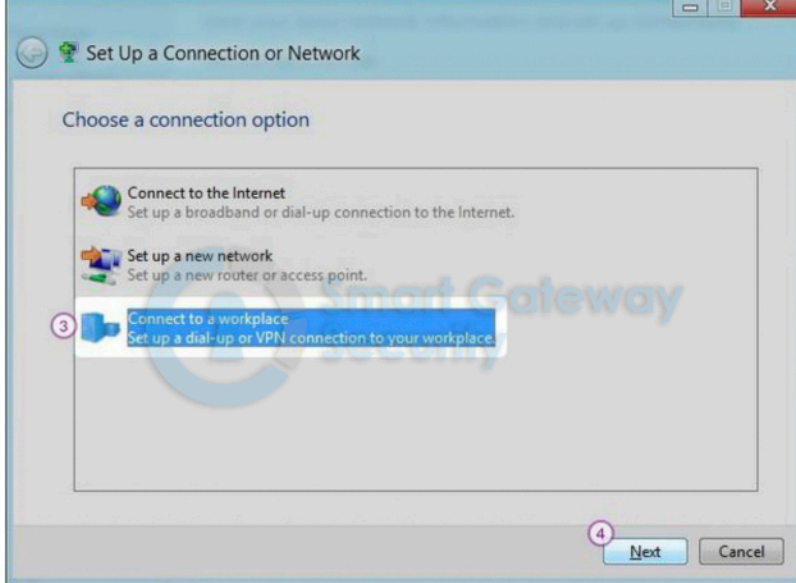
1. Click on "Open Network and Sharing Center" from the network icon from the taskbar (1) or click on "Network and Sharing center" from Control Panel.



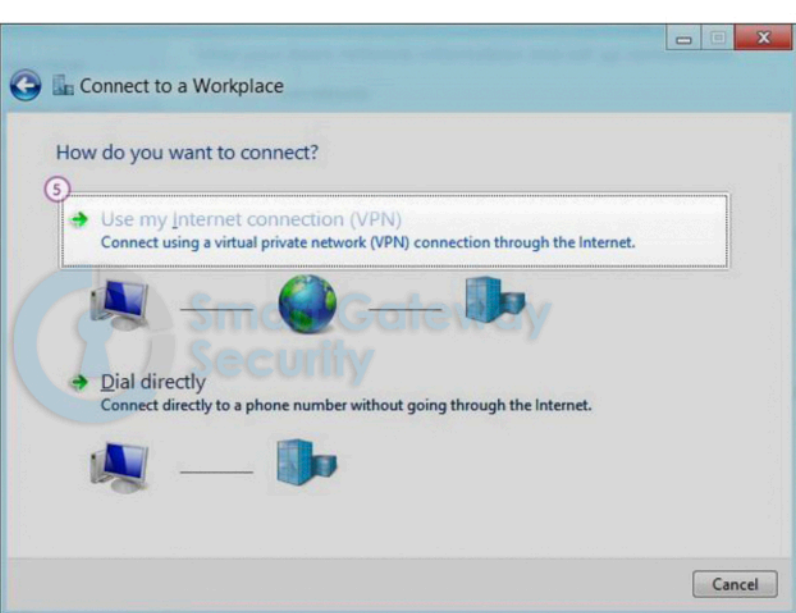
2. Click on "Set up a new connection or network" (2).



3. Select "Connect to a workplace" (3) and click "Next" (4).



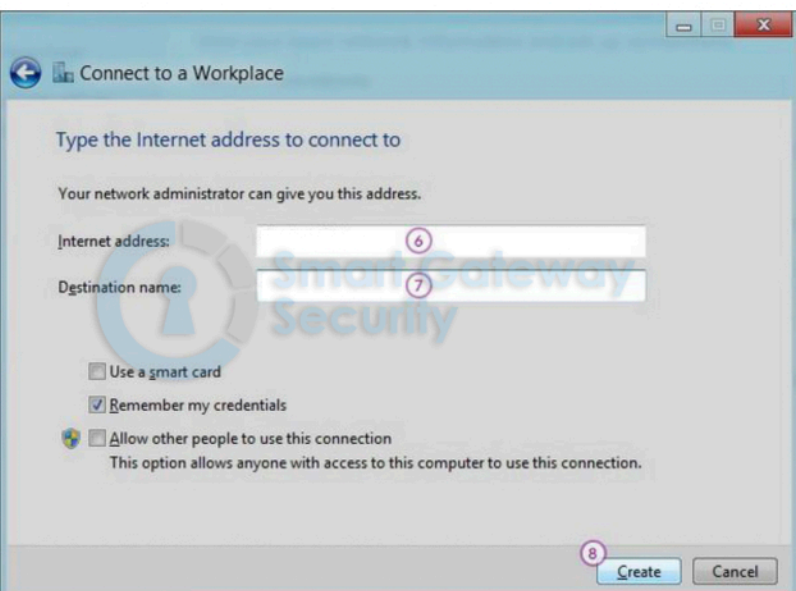
4. Choose "Use my Internet Connection (VPN)" (5).



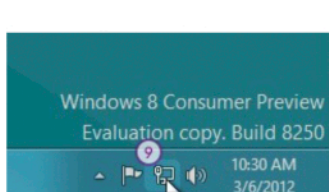
5. In the "Internet Address" (6) field type IP address of the available servers

"Destination name" field (7) type "VPN (PPTP)".

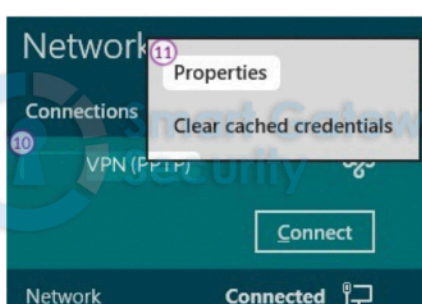
Click "Create" (8).



6. Click on the monitor icon (9) on the bottom right-hand corner.

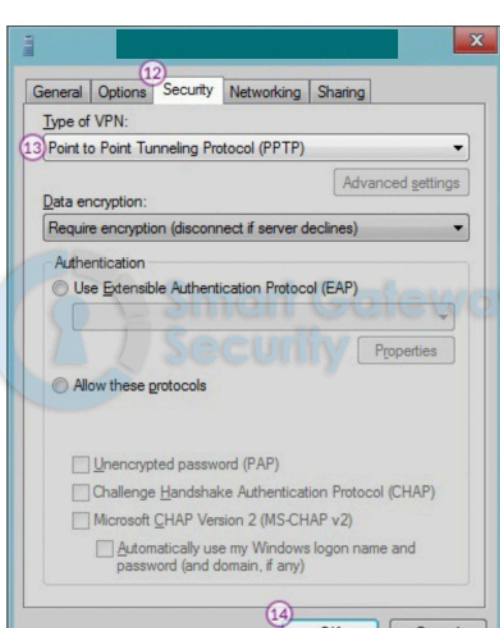


7. Right-click on the "VPN (PPTP)" connection (10), and choose "Properties" (11) from the menu.

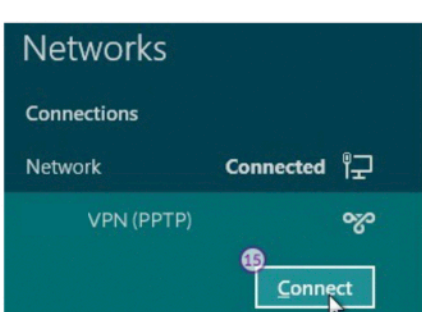


8. Select "Security" tab (12) and for "Type of VPN" select "Point to Point Tunneling Protocol (PPTP)" (13).

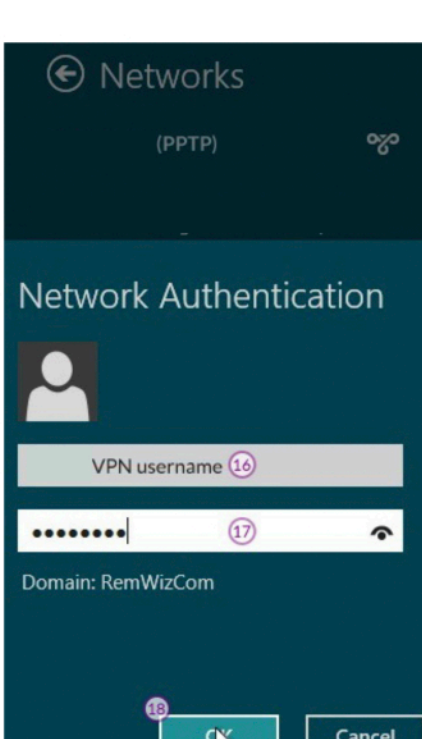
Click "OK" (14).



9. Click again on the monitor icon on the bottom right-hand corner, and click "Connect" (15) to "VPN (PPTP)".



10. In the next fields type your VPN username (16) and password (17) and click "OK" (18).



11. When next to "VPN (PPTP)" is written "Connected" (19) your connection has been created.

